

## LOW INSTALLATION COST

The nozzles provides wider protection area and lowest flow points against to other brands. The plenum nozzles D-A protection area is 3 m x 1,2 m but it is 2,4 m x 0,5 m in the other systems. The duct and hood nozzles D-A flow point is 1 m but it is 2 m in the other systems. The cooking appliance nozzle D-A flow point is 1 m but it is 2 m in the other systems.

As a result;

1. Defender offers low labor and piping cost due to wider nozzle protection area.
2. Defender offers competitive solution with small sized cylinders after low flow points.

## LOW MAINTANENCE COST

1. The maintenance is easy.

Defender can be checked easily by a gauge (green zone).

The other system can be check by a special equipment like sensitive scales.

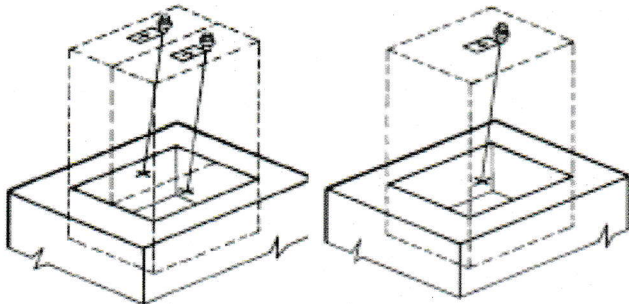
2. The filling cost is low.

Defender can be pressurized with nitrogen without any cylinder after each discharge.

The other systems need an additional pressurized nitrogen cylinder after each discharge.

Defender is tested according to LPCB 1223, UL300 and ISO15371.

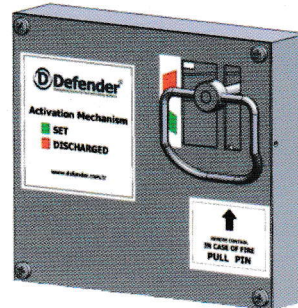
### WIDE NOZZLE COVERAGE



OTHERS

DEFENDER

### AUTO/MANUAL



ACTIVATION

### PRESSURIZED



CYLINDER

## PORTABLE DEFENDER KITCHEN EXTINGUISHER

3,6 and 9 Liter

13F, 40F and 75F

TS 862 EN 3/7-A1 Certified

Wide Protection Area

Economical Refilling



## SPLASH PROOF

